

# DMI70I\_OPENG77

硬件：BAOFENG宝锋 DM1701、DM1701A、DM1701B

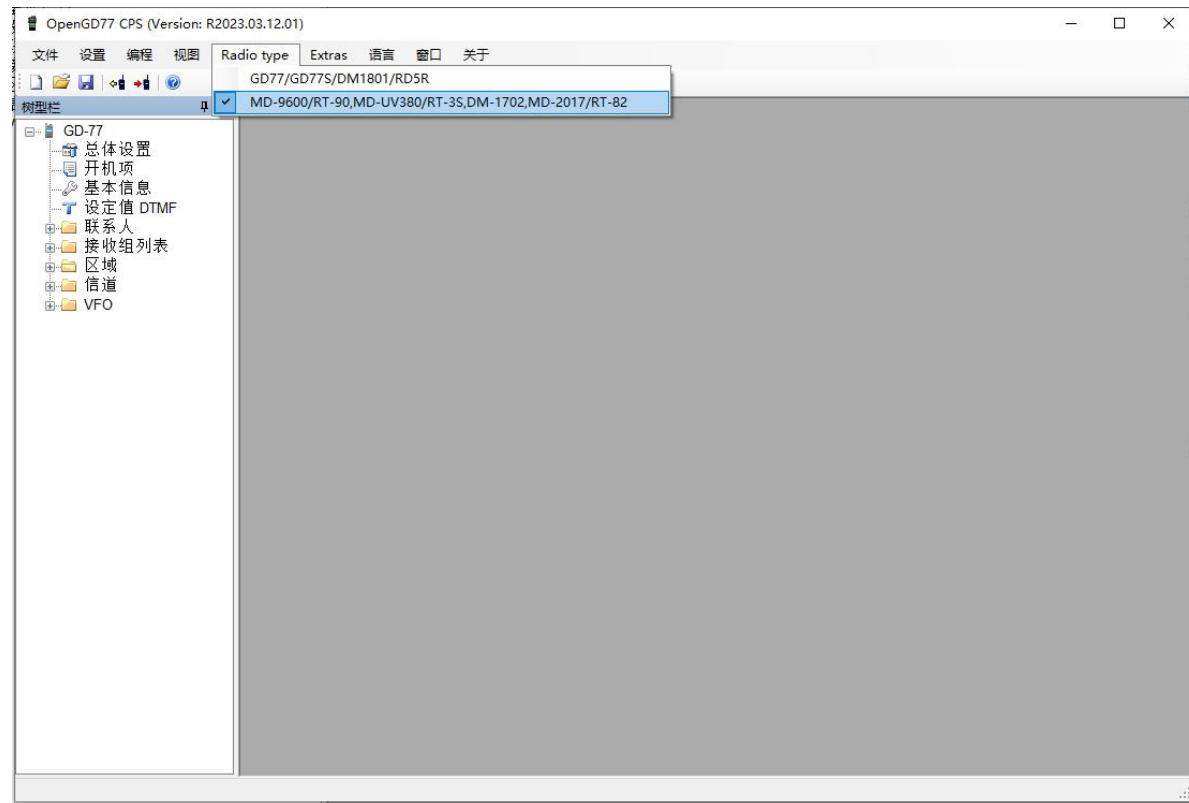
CPS:OpenGD77 CPS

固件：MD9600-CSV(2571V5)-V26.45.bin

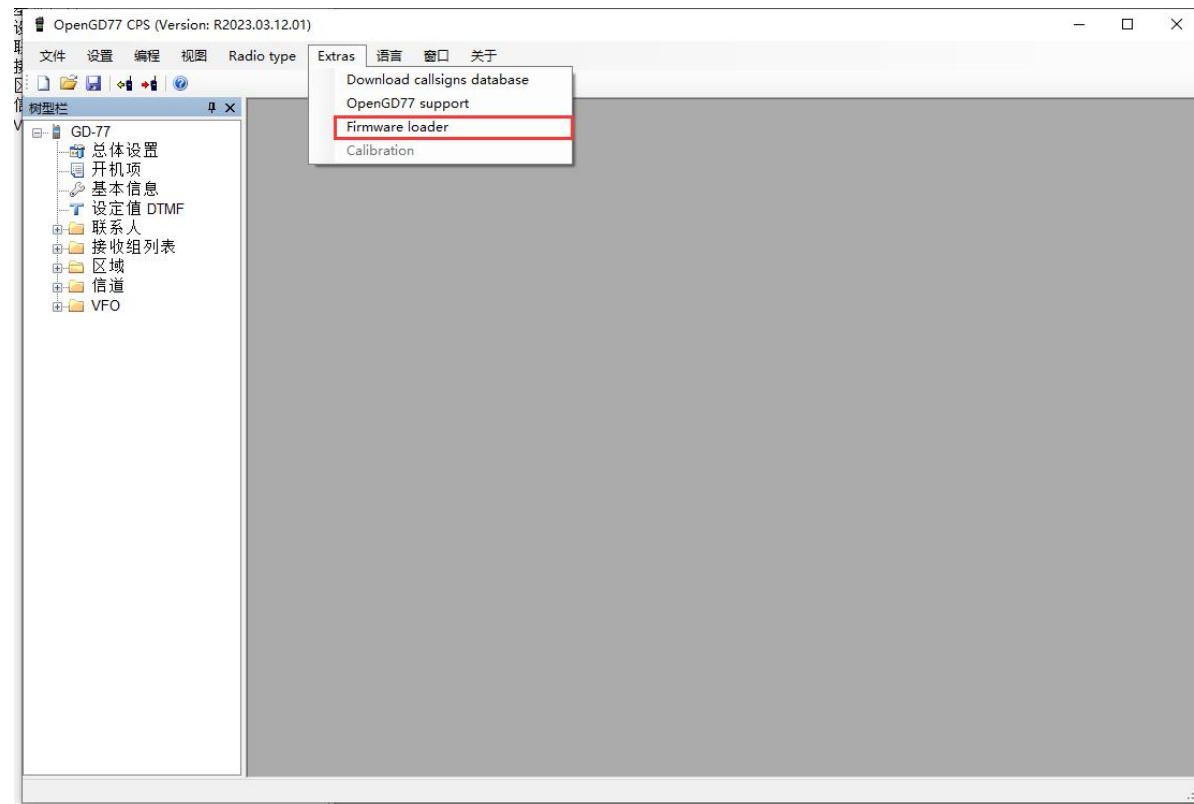
OpenDM1701.bin

[https://www.opengd77.com/downloads/CPS/Latest/OpenGD77CPSInstaller\\_R2023.03.12.01.exe](https://www.opengd77.com/downloads/CPS/Latest/OpenGD77CPSInstaller_R2023.03.12.01.exe)

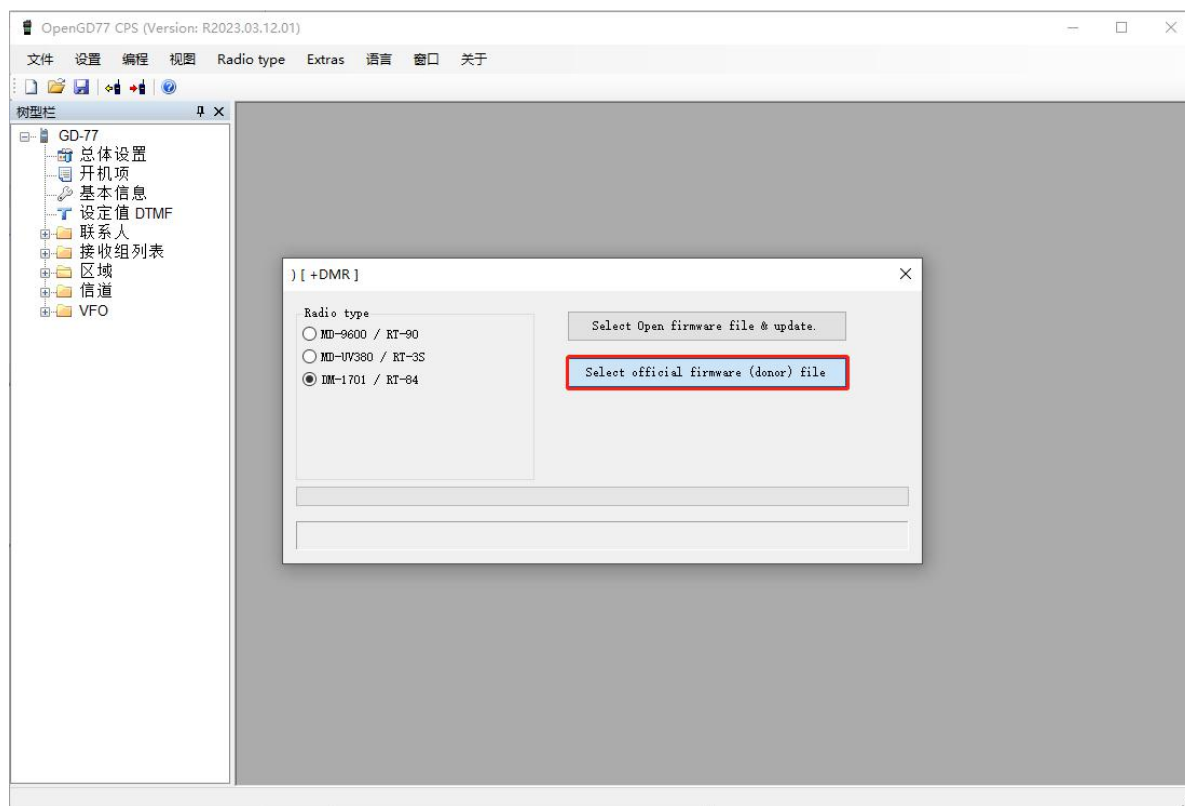
# 无线电类型选择



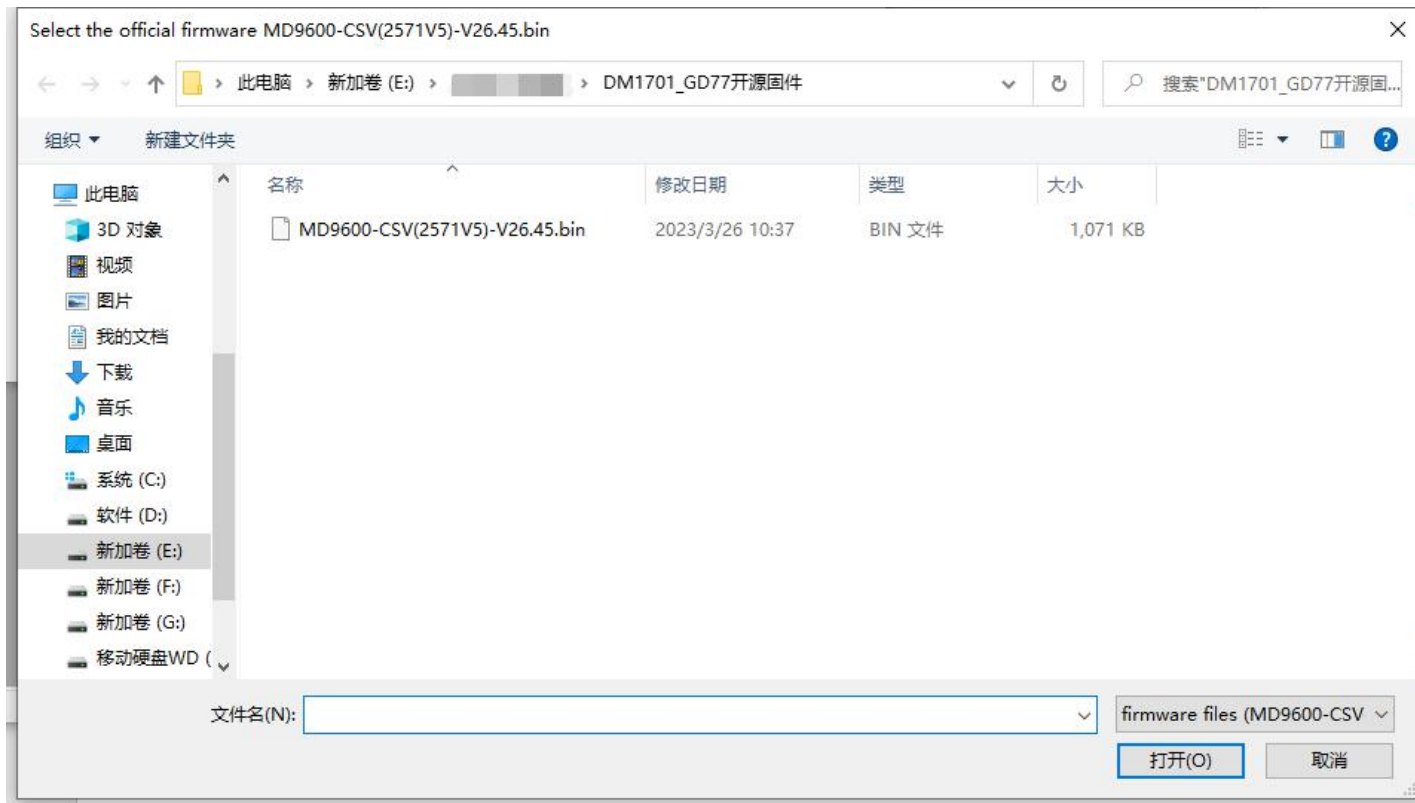
固件下载： Extras>Firmware loader



选择机型及固件：  
DM-1701/RT84>>Select official firmware (donor) file



选择MD9600-CSV(2571V5)-V26.45.bin, 并且打开

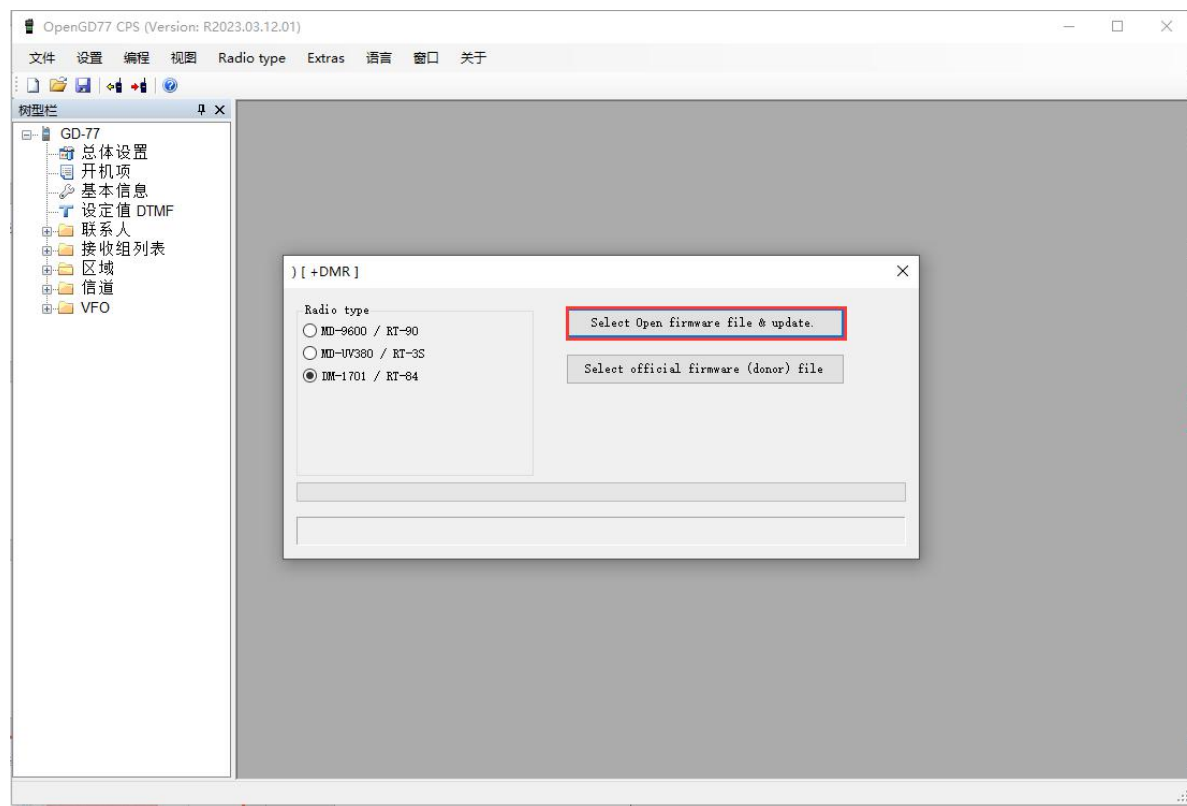


连接写频线，同时按住PTT和SK1 (PTT上方) 键打开对讲机，  
进入固件升级模式（红绿灯交替闪烁）

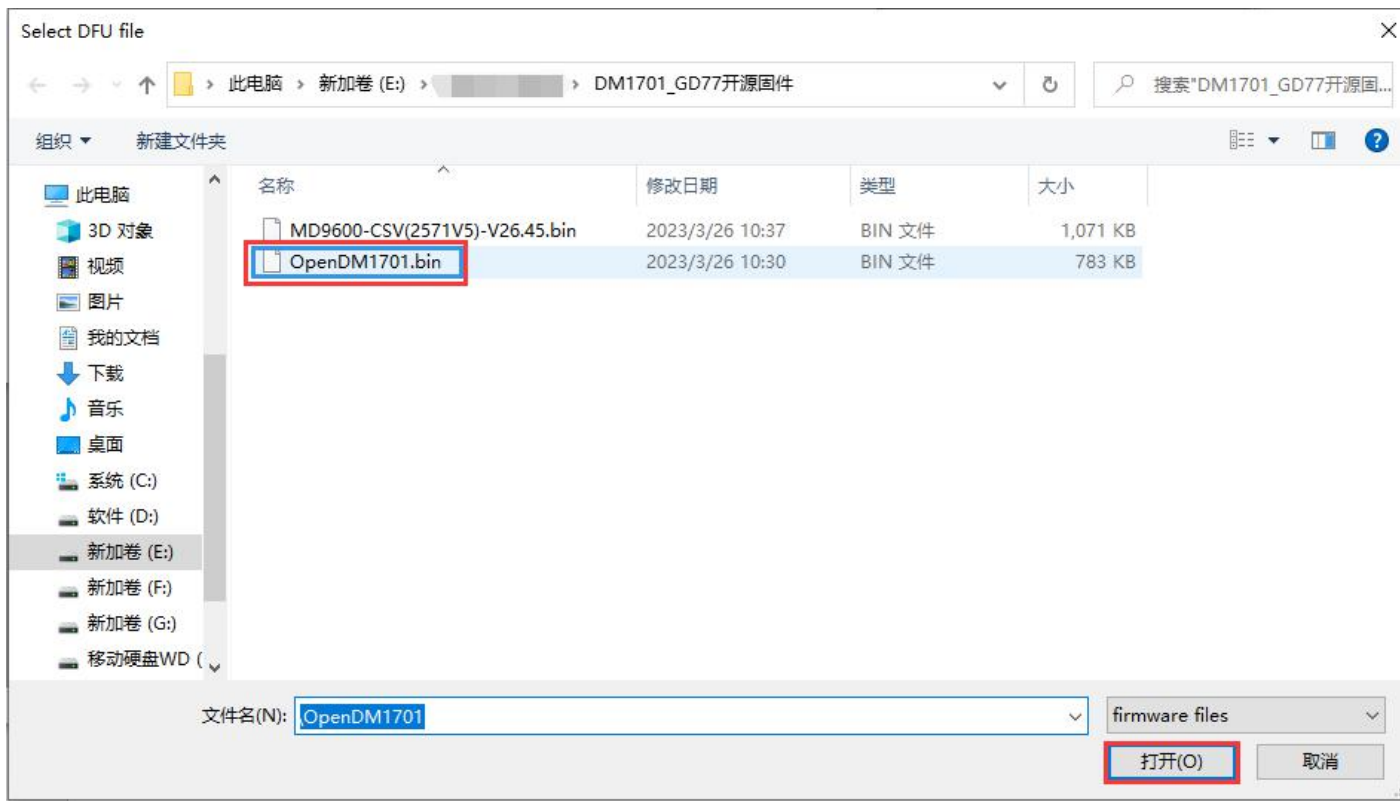


选择开源固件:

>>Select open firmware file & update.>>OpenDM1701.bin

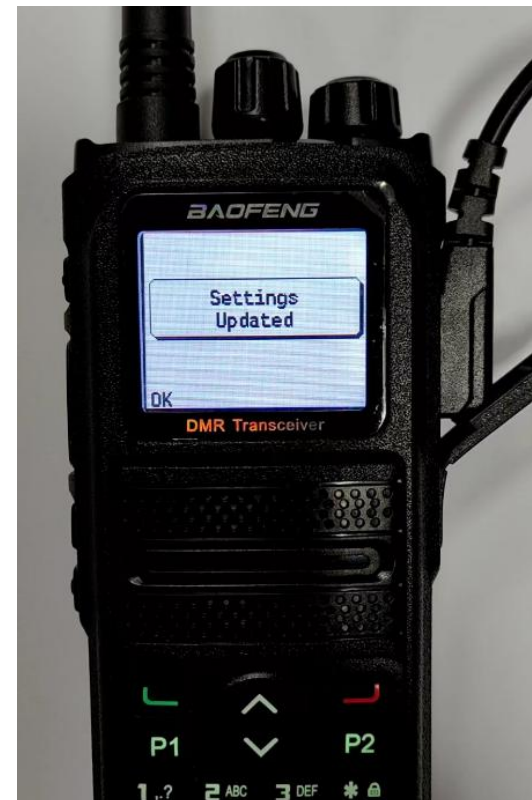
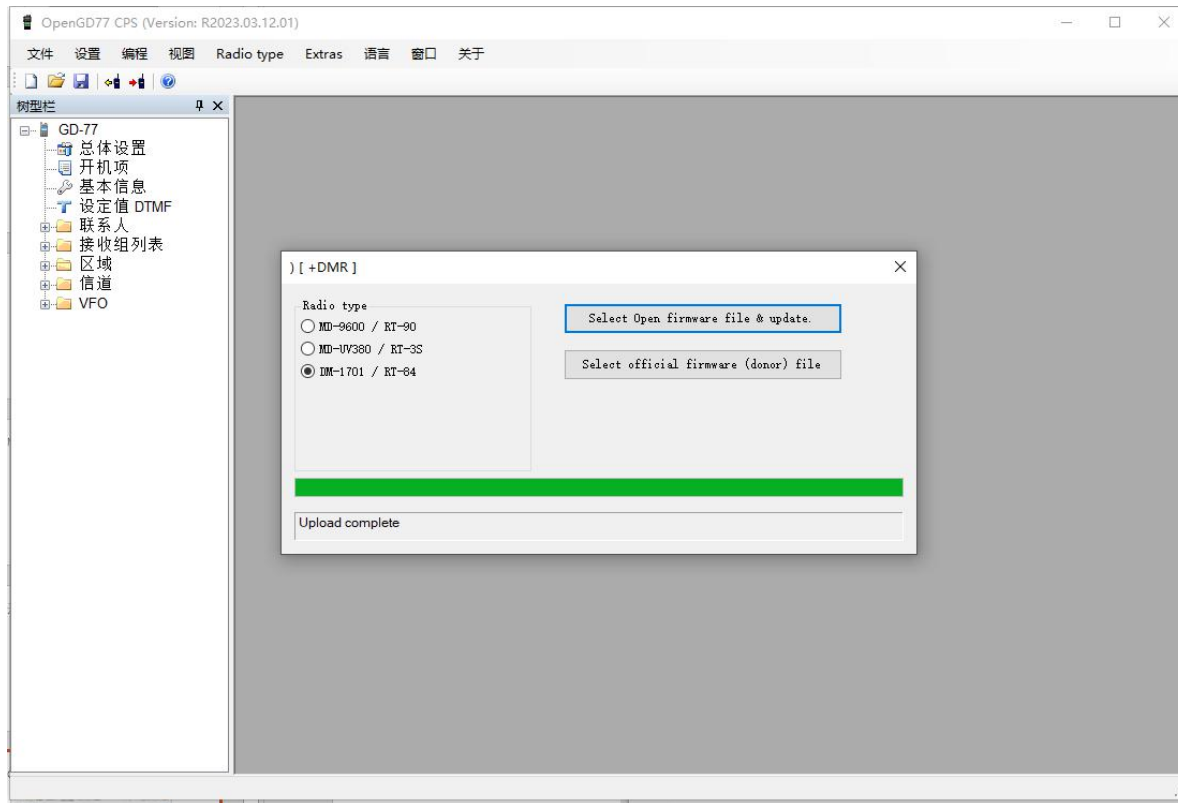


选择OpenDM1701.bin， 点击打开





点击打开，进入刷机状态。



# 写入代码插件:

## Extras >> OpenGD77 support >> Write codeplug

